

Subject: Message from Health Care Authority Director Regarding the State Health Care Innovation Plan

Please see the attached message addressed to Washington State's Tribal Health Care Leaders from Health Care Authority Director, Dorothy Teeter, regarding the State Health Care Innovation Plan.

If you have questions, please contact:

Karen Merrikin
Project Director
Karen.merrikin@hca.wa.gov
360-725-0855

Laura Zaichkin
Project Manager
Laura.zaichkin@hca.wa.gov
360-725-1635

You may contact the Health Care Authority Tribal Liaison at:

Karol Dixon
Tribal Liaison
Karol.Dixon@hca.wa.gov
360-725-1649

General questions can be addressed by contacting:

The SIM Help Desk
simquestions@hca.wa.gov
360-725-1447

Thank you,
Lucy

Lucy Crow
Office of Legislative Affairs and Analysis
Health Care Policy
WA State Health Care Authority
(360) 725-1868
Lucy.Crow@hca.wa.gov



STATE OF WASHINGTON
HEALTH CARE AUTHORITY

626 8th Avenue, SE • P.O. Box 45502 • Olympia, Washington 98504-5502

May 23, 2013

TO: Washington State's Tribal Health Care Leaders

FROM: Dorothy Teeter
Director

SUBJECT: State Health Care Innovation Plan

This week, Washington State formally launched collaborative work to create a five-year plan for health care innovation. Our government-to-government relationship with the Tribes of Washington State is important to us and we seek to include you in the planning process.

State Health Care Innovation Planning began to formulate after Washington State received a federal grant in February to create a five-year plan for innovation, building on effective practices already in use throughout our state. We have a veteran project director, Karen Merrikin, multiple state agencies, public and private individuals, and health care organizations that have already stepped forward to assist.

At the American Indian Health Committee Webinar next Tuesday, May 28, from 1:00 to 4:00 p.m., my staff will share more information about the planning process and opportunities for involvement. We are putting together a corps group willing to help review and critique the building blocks of the State Health Care Innovation Plan as they are developed between now and September, as well as correspondents interested in sharing their thoughts (likes, dislikes, and ideas for improvement) as the plan goes together.

Will you join us? Please review the attached documents and send your contact information and any immediate thoughts to our project help desk at simquestions@hca.wa.gov. What you think matters.

Thank you

Attachments

2013 SIM TIMELINE



Discovery
April-May



Analysis
May-June



Assessment
& Feedback
July-August



Draft HCIP
August-
September



HCIP
Synthesis
September

**PLAN
IN PLACE**
*Transformation
begins!*

Washington State Health Care Authority

Consulting Project Director: Karen Merrikin

Contact: Rhonda Stone, (360) 725-1447

rhonda.stone@hca.wa.gov

STATE INNOVATION MODELS Initiative (SIM):

A Plan for Multi-Payer Payment and Health Care Delivery System Transformation

Last year, Washington State moved to accelerate its efforts toward better health and health care at lower cost by working collaboratively to develop an ambitious proposal for delivery system and payment reform. More than 80 health care organizations joined state leaders in support of an initial vision laid out in Washington's SIM Testing Grant application to the Center for Medicare and Medicaid Innovation (CMMI). The result of this initial application is a six-month \$999,975 award from CMMI for the purpose of developing a five-year Health Care Innovation Plan for the State of Washington. Development of this plan will enable Washington to compete with other states for an anticipated second round of CMMI Testing Grant funding, likely to be announced later this year.

One of Only Three States in the Nation

Washington was one of only three states in the nation to receive a SIM Pre-Testing Award. The grant will enable state health care leaders to work collaboratively with communities to set common aims through a plan that improves the patient experience of care, improves the health of populations, and reduces the per capita cost of care.

The grant enables a multi-payer design and testing approach that will shift Washington's health care system to one that:

- (1) Rewards quality outcomes rather than volume.
- (2) Drives better integration of medical and behavioral health services.
- (3) Partners with community-based organizations and public health systems to improve overall community health.

An Inclusive Process

As part of the planning process, Washington State will engage a broad spectrum of community leaders, medical experts and organizations, consumers, partners from business and industry, nonprofit organizations, and more.

Planning for Washington State's Collaborative Health Care Innovation Plan (HCIP)

Contact us if you would like additional information on this collaborative effort to achieve two core goals:

- (1) Creation of the five-year innovation plan that will move us together toward change, and
- (2) Use of the plan to inspire change, reorganize existing resources, and pursue new funding partnerships to deliver the plan's ultimate, triple-aim objective:

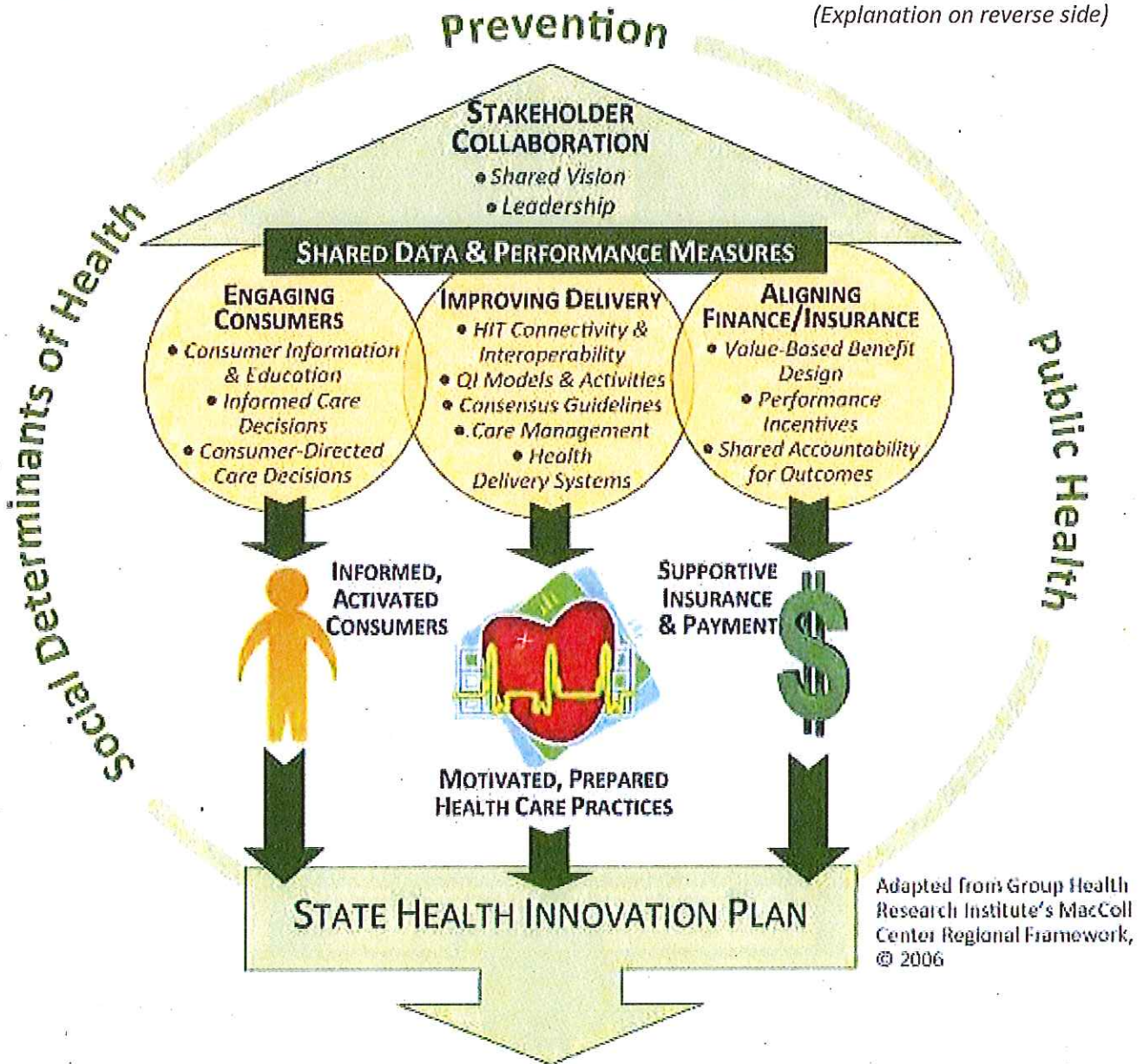
Better health and better care at lower cost for Washington

Planning for the Future of Health Care in Washington State

Washington's six-month State Health Care Innovation Planning process will refresh and align key strategies to improve health and health care delivery for Washington's residents and communities. The aim: *All people in Washington achieve and maintain better health.* This will help drive systemic changes that result in **BETTER HEALTH** and **BETTER CARE** at **LOWER COST**. We've designed a rapid transformation planning process that will result in high quality care that fits family needs. The process involves collaboration, shared vision, and leadership and "looks" something like this:



(Explanation on reverse side)



Improved Health Outcomes & Reduced Cost

Funding for Washington State Health Innovation Planning provided by the Center for Medicare & Medicaid Innovation State Innovation Models Pre-Testing Grant

Washington State Health Care Authority

Consulting Project Director: Karen Merrikin
Contact: Rhonda Stone, (360) 725-1447
rhonda.stone@hca.wa.gov

Stakeholder Collaboration

Washington's Health Care Innovation Planning process is led by a core team within the Washington State Health Care Authority (HCA) and guided by Cabinet-level leaders from branches of state government with roles in health and health care. While we have extremely short timelines to develop our plan, we know that the participation of the people who experience, deliver, pay for, regulate and improve care and population health are essential to both the planning process and transformation of health care in Washington State. Our planning process is designed to be collaborative, so we can identify gaps, best practices, levers and stakeholder readiness, with the work resulting in an effective roadmap for transformation.

Shared Data & Performance Measures

Purchasers, health care professionals and payers all need access to data to drive payment and quality improvement activities. Consumers need to have information on the performance of health plans, health professionals and institutions, and information about the care and services they receive, both to understand their health and to improve their ability to make informed health care decisions. Washington's innovation plan will consider ways to boost our ability to share data and drive better performance through shared measures.

Improving Delivery

The State Health Care Innovation Plan will be aimed at accelerating our combined efforts to reduce the costs of care while improving health and quality of care and outcomes across our state. Our proposed five year aims are to: improve care transitions especially for those with multiple or complex conditions; pay for value and improved outcomes through aligned multi-payer activities; improve and make visible health plan and provider performance through metrics, accreditation, and public reporting for safe, accessible and effective care; achieve seamless, integrated physical and behavioral health care from the patient's perspective, with initial focus on Medicaid populations; speed identification and adoption of effective strategies aimed at overuse, misuse and underuse of care; and strengthen health promotion and prevention capabilities, and link community health supports and resources with health care delivery.

Engaging Consumers

Driving better care and better health depends in part on assuring informed, actively engaged consumers. Patients and families need the tools to better understand how to be active participants in improving their health, make informed health care choices, and understand costs. Our state health care innovation plan will aim to give patients and families more tools and information to drive better outcomes.

Aligning Finance / Insurance

Improving delivery of more cost effective, patient centered care demands aligned incentives at the payment level. Our planning work, while centered on improving health care delivery, will consider levers and strategies that involve how health care is purchased, and how coverage and care intersect.

Health is more than health care.

Keeping people healthier is one of the most effective ways to reduce health care costs. The State Health Care Innovation Planning process will consider disease prevention and community based programs to increase our ability to live long, healthy, and productive lives.

Improved Health Outcomes & Reduced Cost